

Commercial®
95 340

Architectural Shade Fabric

DELTA
TENTS & TEXTILE SHADES



Commercial 95® 340 Architectural Shade Fabrics is designed for tension structures and shade sails, it is used on a wide variety of applications. It offers the ultimate combination of **maximum sun protection, strength and durability** to ensure maintenance-free long-life performance.

Engineered in Australia, Commercial 95® 340 is made from high-quality UV-stabilised HDPE. Strong and stable, it's suitable for harsh Australian conditions. It's 100% lead and phthalate-free, and we're proud to state it is the first architectural shade cloth in the world to be granted Oeko-Tex® 100 and Greenguard® certification.



- Knitted lock-stitch construction for fray and tear resistance, offers more air movement and better channeling of cool breezes
- UV-stabilised HDPE monofilament and tape yarn provides optimal balance between strength and UV block, with easy fabrication and minimal maintenance
- Stentered (heat set) for prevention of shrinking and ease of fabrication
- UV Block range 91.1%–95.5% reduces sun exposure for safe and extended time outdoors
- Full 10-year UV degradation warranty on fabric
- 100% lead and phthalate free for a healthier environment
- Greenguard® and Oeko-Tex® certified provides confidence in operational quality assurance
- Engineered in Australia for the harshest conditions
- 100% recyclable

Properties

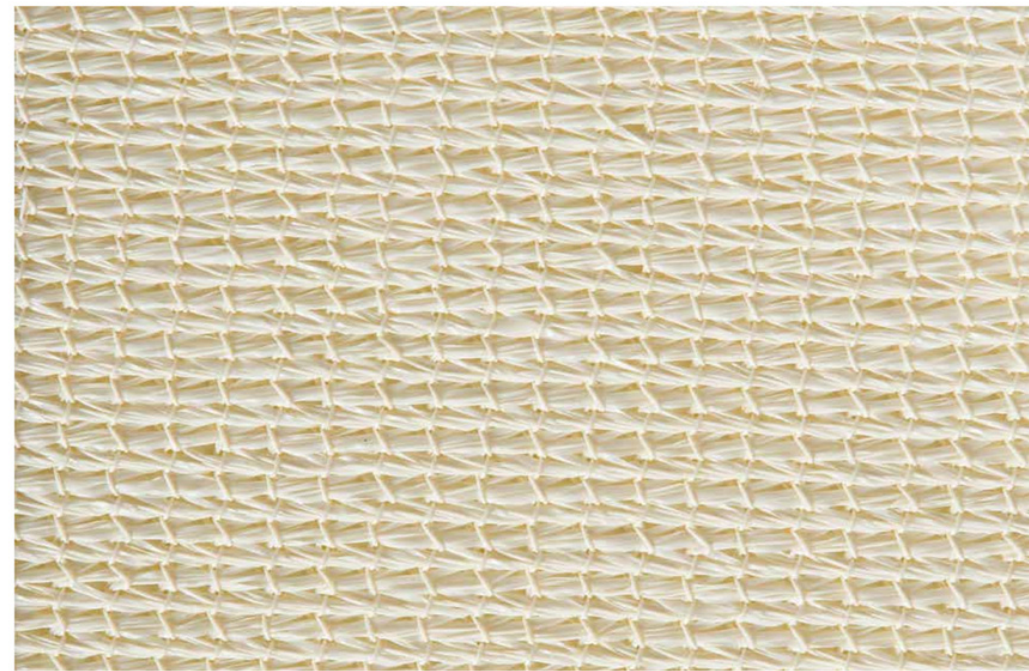
| | |
|---------------------|-------------------------------|
| Nominal fabric mass | 340gsm ± 20 |
| Roll length (m) | 40 (folded) 100 (unfolded) |
| Roll width (m) | 3 |

Performance

| | |
|---------------------------------|-------------|
| Maximum force - warp (mean) | 670 N/50mm |
| Elongation at max. force (mean) | 117% |
| Maximum force - weft (mean) | 2400 N/50mm |
| Elongation at max. force (mean) | 83% |
| Breaking force - warp (mean) | 990 N |
| Breaking force - weft (mean) | 2000 N |
| Wing tear - warp (mean) | 184 N |
| Wing tear - weft (mean) | 347 N |
| Bursting pressure (mean) | 3500 kPa |
| Bursting force (mean) | 1937 N |
| Flammability index | 12 |

Applications

- Tension structures
- Awnings
- Shade sails
- Car Park structures



Natural 445003 | 483951
93.1% UVR Block



Aquatic Blue 444938 | 483937
91.1% UVR Block



Black 444945
94.5% UVR Block



Navy Blue 445010
94.4% UVR Block



Sky Blue 445034
92.2% UVR Block



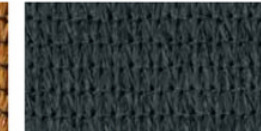
Brunswick Green 444952 | 483975
94.7% UVR Block



Cayenne 455255
92.4% UVR Block



Cedar 465360
93.6% UVR Block



Charcoal 444969
93.4% UVR Block



Cherry Red 444976
91.2% UVR Block



Desert Sand 444983 | 483845
93.8% UVR Block



Gun Metal 455262 | 483944
93.2% UVR Block



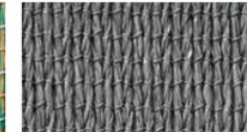
Yellow 445072
95.5% UVR Block



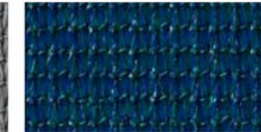
Deep Ochre 444990
94.6% UVR Block



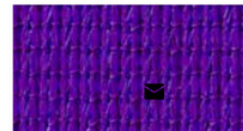
River Gum Green 445027
92.9% UVR Block



Steel Grey 445041 | 483968
94.3% UVR Block



Turquoise 445065
91.5% UVR Block



Royal Purple 459185
91.1% UVR Block



Bright Green 459215
92.5% UVR Block



Orange 459208
94.0% UVR Block

DELTA TENTS & TEXTILE SHADES

HEAD OFFICE
50 CCA, SECTOR C,
DHA PHASE 6, LAHORE.
WHATSAPP +923000444175
OFFICE +924235730001

FACTORY
21 KM GT RD, MANOABAD
MURIDKE, LAHORE, PUNJAB
PAKISTAN.
EMAIL info@deltatentsintl.com

www.deltatentsintl.com



Please note, due to the limitations of the printing process, colours may not represent the true colour. The above results are typical averages from independent testing and quality assurance testing and are not to be taken as a minimum specification nor as forming any contract between GALE Pacific and another party. Due to continuous product improvement.